

Accessories



Safety

EYE FTC.S



FOTO FTC



BIZA FL

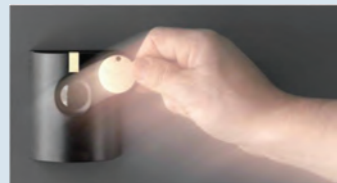


Access

BIZA CALL



BIZA TEO



BIZA CARD



Remotes

REMG T2IO



REMG T2DS



REMG T2RC



HTS Group Ltd
0800 487 476
Web: www.htsgroup.co.nz
email: 4sales@htsgroup.co.nz

Gate Motion

MOTA 210 SWL 240



Technical Data

	MOTA 210 SWL 24	MOTA 210 SWL 240
Absorbed Power	70 W	420 W
Absorbed Current	2.5 A	1 A
Max Stroke	270 mm	300 mm
Mechanical Stops (Opening /Closing)	Yes	Yes
Power Supply	24Vdc	230Vac
Opening Time	9 seconds	19 seconds
Duty Cycle	Intensive Use	30%
Operating Temperature	- 20 / + 70 Deg C	- 20 / + 70 Deg C
Protection Level	IP 44	IP 44
Stroke Length	270 mm	270 mm
Thrust	1600 N	1600 N
Unit Weight	8.2 Kg	8.2 Kg

MOTA 210 SWL 24

Surface Mount

- 24 Vdc irreversible electromechanical operator for intensive use
- Prepared for battery back-up system
- Soft start and slowing down functions adjustable in the opening & closing positions
- Self Locking

MOTA 210 SWL 240

Surface Mount

- 240 V easy and fast to install thanks to the front articulation and the two mechanical stops, adjustable both in opening and closing phases
- Strong and reliable rolled worm shaft with Ø 20mm spherical section for a silent movement and easy manual operation

MOTA 400 SWU 24



Technical Data

	MOTA 400 SWU 24
Absorbed Power	120 W
Absorbed Current	6 A
Leaf Max Width	4.0m
Power Supply	230 Vac
Motor Power Supply	24 Vdc
Opening Time	20 seconds
Duty Cycle	Intensive Use
Operating Temperature	- 20 / + 70 Deg C
Protection Level	IP 67
Torque	360 Nm
Unit Weight	11.6 Kg

MOTA 400 SWU 24 (DU.IT14N)

Underground installation

- 24Vdc Self-locking electromechanical operator
- Foundation casing in galvanized or stainless steel that helps position the operator, making installation easier and, in the case of maintenance, also allows replacement of the operator without the need to dismantle the existing gate.
- The mechanical components are made all metal in order to assure strength and solidity

Technical Data

Type

Type

	MOTA 250 SWA 24	MOTA 250 SWA 24C
Absorbed Power	80 W	120 W
Absorbed Current	5.5 A	0.5 A
Leaf Max Width	2.5m	2.5m
Leaf Max Weight	300 kg	300 kg
Power Supply	24Vdc	24Vac
Opening Time	12 seconds	12 seconds
Duty Cycle	Intensive Use	Intensive Use
Operating Temperature	- 20 / + 70 Deg C	- 20 / + 70 Deg C
Protection Level	IP 44	IP 44
Torque	200 Nm	200 Nm
Unit Weight	10.0 Kg	8.3 Kg



MOTA 250 SWA 24C

MOTA 250 SWA 24 (MB 24)

Surface Mount

- Irreversible electromechanical operator equipped with strong, articulated and anti-shearing arm
- Suitable for gates installed on large posts
- Tempered steel mechanical features to ensure long life operation.
- Equipped with quick unlock device operating by means of a personalized key.
- Two electric limit switches included

MOTA 250 SWA 24C (MBE 24)

Surface Mount

- 24 V dc self-locking electromechanical operator for intensive use with a strong, articulated and anti-shearing arm
- Anti crushing control
- Prepared ready for battery back-up system

Technical Data

Type

	MOTA 350 SL 24
Absorbed Power	80 W
Absorbed Current	0.4 A
Power Supply	230 Vac
Gate Max Weight	350 Kg
Motor Power Supply	24Vdc
Opening Time	12 m /min
Duty Cycle	Intensive Use
Operating Temperature	- 20 / + 70 Deg C
Protection Level	IP 44
Torque	12 Nm
Unit Weight	9.0 Kg



MOTA 350 SL 24

MOTA 350SL 24 (BULL 424)

- Residential Use
- 24Vdc operator for intensive use with built-in control panel and encoder
- Magnetic limit switches are available as accessory
- Fast and easy unlock device with a customized key

MOTA 400 SWA 24



Technical Data

Type

	MOTA 400 SWA 24
Absorbed Power	120 W
Absorbed Current	6A
Leaf Max Width	3.0m
Power Supply	230 Vac
Motor Power Supply	24 Vdc
Opening Time	9 seconds
Duty Cycle	Intensive Use
Operating Temperature	- 20 / + 70 Deg C
Protection Level	IP 44
Torque	260 Nm
Unit Weight	13 Kg

MOTA 400 SWA 24 (PREMIER)

Surface Mount

- 24Vdc Irreversible electromechanical operator for intensive use.
- Anti crushing control
- Irreversible or reversible electromechanical operators suitable for gates installed on large posts.
- Strong, articulated, galvanized and anti-shearing arm
- Only one version for right/left hand side installations
- Opening and closing limit switches included and pre-wired
- Low maintenance required

MOTA 1500 SL 24



Technical Data

Type

	MOTA 1500 SL 24
Absorbed Power	420 W
Absorbed Current	2.5 A
Power Supply	230 Vac
Gate Max Weight	1500 Kg
Motor Power Supply	230Vac
Opening Time	10.5m / min
Duty Cycle	40%
Operating Temperature	- 20 / + 70 Deg C
Protection Level	IP 44
Torque	50 Nm
Unit Weight	16.3 Kg

Heavy Duty Use

- 230 Vac mono-phase operator with built in control panel
- Magnetic limit switches are available as accessory
- Fast and easy unlock device with a customized key
- Anti rushing Control